

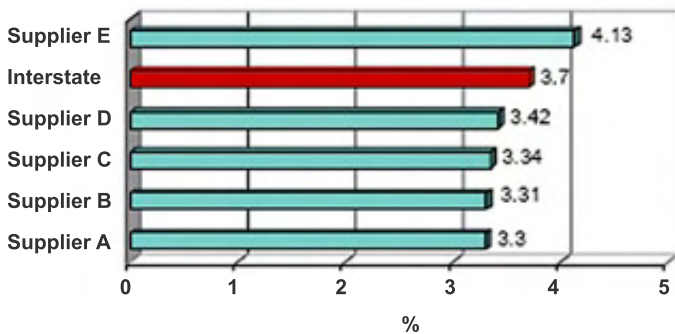
Prevent Scoreline Cracking with Interstate Liner

Scoreline cracking typically involves heavy weight liner greater than 42# and occurs more often in winter when cold and dry conditions exist.

A variety of linerboard properties influence score cracking are liner furnish (virgin versus Recycled), elasticity or stretch, moisture, top sheet fiber mix - softwood (longer fibers) vs. hardwood (shorter fibers) & internal bond

Independent laboratory testing shows that Interstate Liner has greater elasticity than most linerboard

Score Cracking Resistant Liner 69# CD Elongation/Stretch



Linerboard producers incorporate hardwood into their top sheet to improve smoothness, but this short fiber often is associated with Scoreline Cracking!

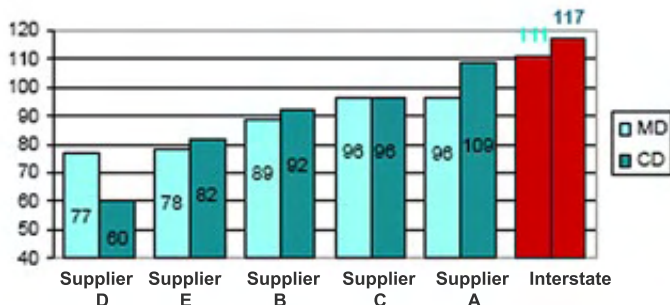
Interstate Resources paper mills use 98% Virgin Softwood in the top sheet and a Soft Nip Calender to create a crack-resistant sheet with superb smoothness.

Prevent Glue Tab Failures with Interstate

Independent laboratory testing has shown Interstate 69# Liner has the highest Scott Internal Bond of all suppliers tested.

Note: TAPPI recommends that Virgin Liner should have a Scott Bond of 100

Glue Tab Failure 69# MD/CD Scott Bond



*Independent laboratory studies have linked poor Scott Bond to Scoreline Cracking.

Because of Interstate's high Scott Internal Bond values, customers can count on Interstate Liner to maximize glue tab strength and avoid glue tab failures in the field.

Let us demonstrate the value we can add to your business

Call your Interstate Resources sales representative or United Corrstack LLC customer service at

 **610- 374-3000 Ext. 209** for a trial of Corrstack®-26 or one of our other fine medium grades.